

Services Included:

- Services of private Chef and Host
- Daily Cleaning
- Food
- In-resort transport
- In-resort concierge service
- Linen and utilities
- Childrens lunch and supper every day
- Champagne and canapés daily
- Carefully selected house wines
- An open spirit bar and a range of soft drinks
- Fresh flowers and daily newspapers

Services that can be arranged:

- Airport transfers from your residence
- Helicopter transfers from the airport
- 4x4 Luxury SUV or vehicle
- In-resort chauffeured transport
- Massage and beauty treatments
- Delivery of skis and passes to the chalet
- Child care
- Wines, spirits, cocktails and champagnes
- Family and corporate events
-

Number of Bedrooms: 5

Guests: 12

Starting price: € 40,000

Jump on your skis and go !

This Chalet positioned perfectly to enable you to ski in and ski out. Giving the advantage of a fantastic central location in one of the most glamorous resorts in the world along with direct access to the best skiing in the Trois Vallees; you are also within walking distance of the famous boutiques of Courchevel 1850.

Recently built, the chalet has been finished to a standard and a style to match the world Luxury you would like to find in one of the best property of Courchevel 1850 !. Sleeping up to twelve guests in five en suite bedrooms, the chalet is alpine chic at its best, with luxurious materials and furnishings designed by Todhunter Earle, a top London interior designer. A whole floor is dedicated to your wellness and relaxation. The lodge features a large swimming pool with panoramic views of the valley, separate jacuzzi, sauna, hammam and a private state of the art gym. And when you would like to go for a Run on the Bellecote , just put your skis on and open your door

Courchevel 1850 is one of the top ski resorts in Europe and as such is very popular with celebrities, rich bankers, Russians and generally anyone liking extreme luxury. The resort itself is very well laid out and most of the accommodation is either by a piste or pretty close to it. The bars, restaurants and entertainment of Courchevel is legendary and very exclusive. Probably one of the best ski resort of the World

Layout

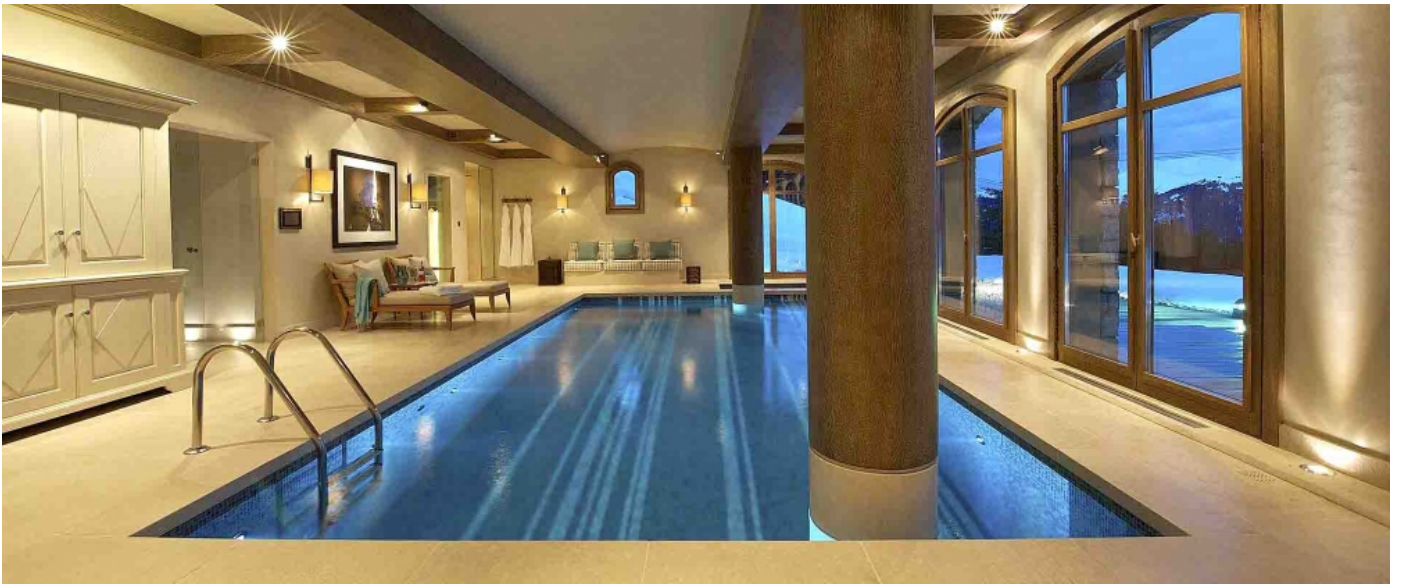
- The Living area develops on four floors served by a lift Bedroom 1 Two bunk beds (one double on bottom) sleeping 2 guests with private bathroom with bath/shower and private balcony. Bedroom 2 Twin or king size double bed with ensuite bathroom with large walk in shower, dressing room and private balcony. Bedroom 3 Master Bedroom superking size double with ensuite bathroom with bath/shower and twin sinks, private dressing room and private balcony. Bedroom 4 Twin or superking size double with ensuite bathroom with large walk in shower, twin sinks and private balcony. Bedroom 5 King size double with ensuite bathroom with large walk in shower and private balcony. Infant cots the best bedrooms for putting baby cots are 2, 3 and 4.

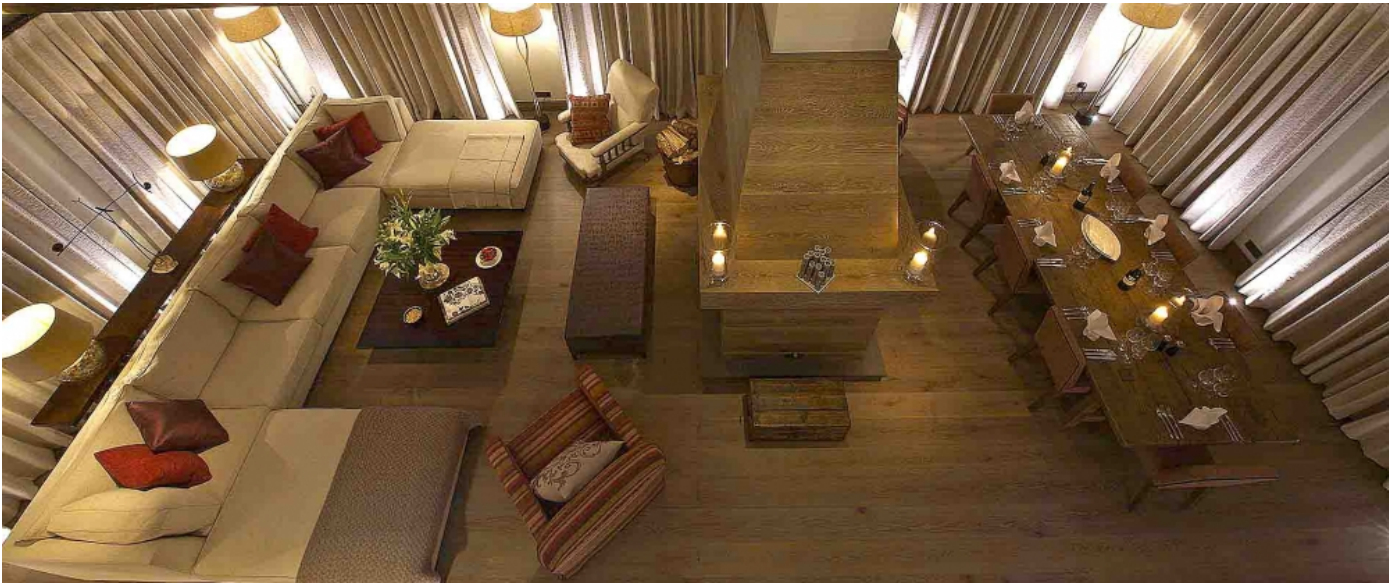
Location

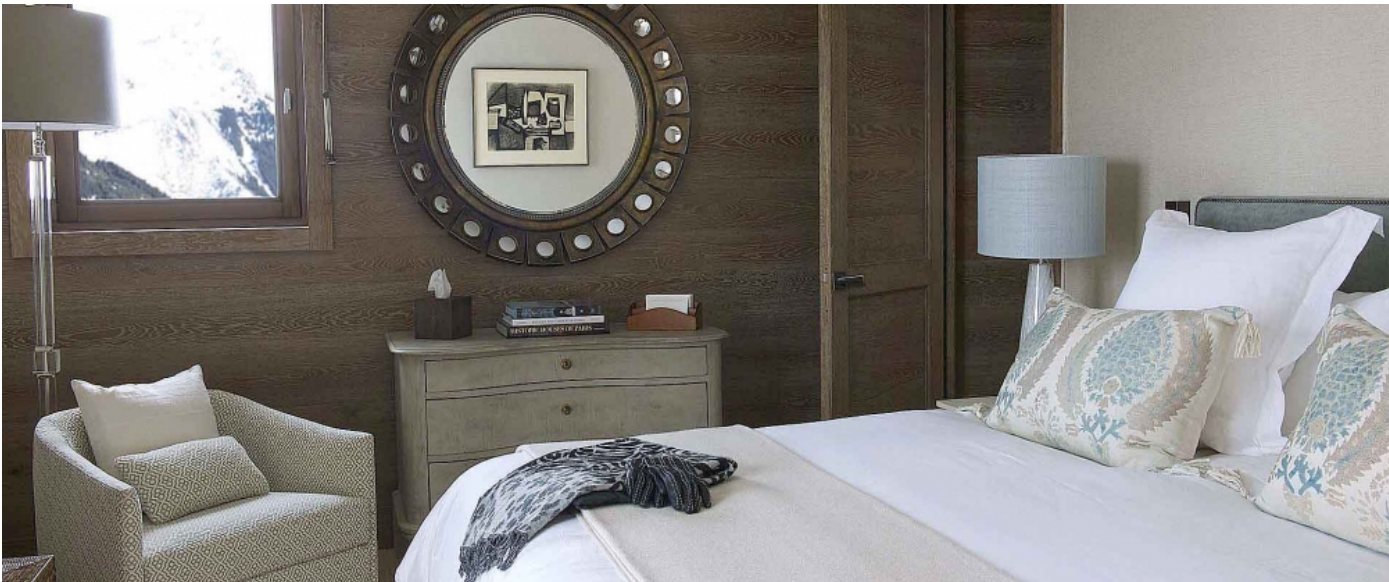
- **Nearest Airport:** Geneva
- **Airport:** 2.5 hours by car
- **Town:** Few minutes walk
- **Skiing:** Few minutes walk
- **Ski-In:** yes
- **Ski-Out:** yes

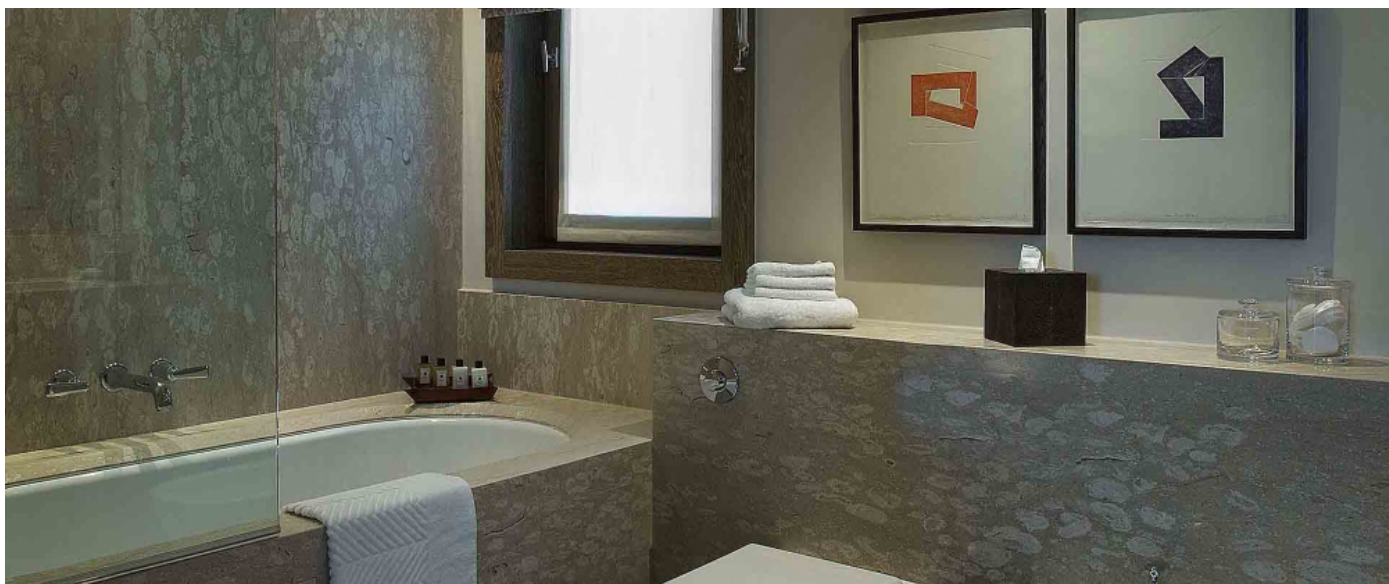
Facilities

- DVD
- Air conditioning
- High End Hifi
- Satellite TV
- Wi-Fi Internet
- Sauna
- Jacuzzi
- Hammam
- Pool, not totally child safe
- Parking spaces
- Handicap Friendly
- Home Cinema
- Kid's Playground
- One safe deposit
- south-east facing









© Copyright 2014 www.esmeraldaluxuryvillas.com
Telephone : +1 212 372 7355 | Email: info@esmeraldaluxuryvillas.com