

ESMERALDA

LUXURY VILLAS

THE FINEST VILLA COLLECTION IN
COSTA SMERALDA AND THE
MEDITERRANEAN SEA

Chalet Artemide
Courchevel 1850
Guests: 10+4
Bedroom: 6

Services Included

- Luxury accommodation on your chosen dates
- Exclusive use of the chalet and its facilities
- Champagne reception
- Fresh Flowers
- Daily housekeeping
- Change of linen and towels every 3 days
- Chef for breakfast and dinner
- Tea and pastry after skiing
- Concierge service

Services that can be arranged

- Transfers to and from home airports
- Resort transfers by taxi or helicopter
- Winter sports travel insurance
- Bespoke family and corporate events
- In-chalet equipment fitting and lift passes
- Extensive in-resort activities
- A la carte wines and Champagnes
- In-chalet childcare
- Almost anything you can wish for

Number of Bedrooms: 6
Guests: 10+4
Starting price: On request

New luxury chalet for rent in Courchevel 1850! This high-end ultra-design Chalet can accommodate 10 adults and 4 children in its 6 en suite bedrooms. The massive Wellness Area includes Hammam, Indoor jacuzzi, Swimming pool, Sauna, Massage Room and Fitness Room. Leisure Area with Cinema room and bar.

Layout

- **Level -1:** Leisure Area with Cinema room and bar and Wellness Area with hammam, Indoor jacuzzi, Swimming pool, Sauna, Massage Room and Fitness Room.
- **Level 0:** 1 Double or Twin bedroom with ensuite bathroom (Shower), garage, Ski room.
- **Level 1:** 1 Double or Twin bedroom with ensuite bathroom (Shower), 1 Children's bedroom for 4 and ensuite bathroom with shower, 1 double or Twin bedroom with ensuite bathroom (Bathtub), 1 Double or Twin bedroom with ensuite bathroom (Bathtub and Shower).
- **Level 2:** Living area: Balcony, Fireplace, Closed kitchen, Professional kitchen, Dining area, Living room.
- **Level 3:** 1 Master bedroom with ensuite bathroom (Bathtub and Shower).

Location

- Nearest Airport: Geneva, Chamberry, Grenoble & Courchevel Altiport
- Airport: 2.30 hours by car
- Town: 150 metres
- Slopes: 220 metres

Facilities

- Wood fireplace
- Ski locker
- Board games
- Boots heater
- Safes
- Elevator
- Garage

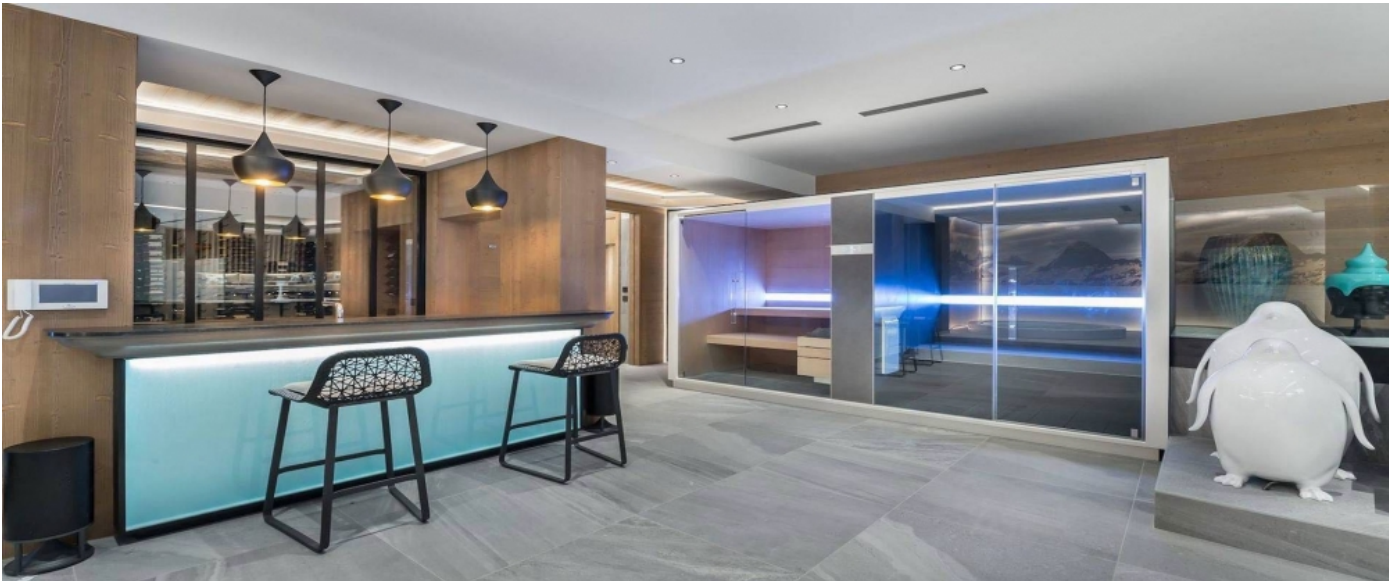














© Copyright 2020 www.esmeraldaluxuryvillas.com
Telephone : +39 338 3902377 | Dubai telephone: +971 55 261 5368 | Email: info@esmeraldaluxuryvillas.com