

# ESMERALDA

## LUXURY VILLAS

THE FINEST VILLA COLLECTION IN  
COSTA SMERALDA AND THE  
MEDITERRANEAN SEA



Chesa Sönne

Sankt Moritz

Guests: 12

Bedroom: 6

- Concierge service
- Private chef
- Chalet host/hostess
- Daily cleaning
- All linen, utilities, and firewood
- Bath products
- Wireless internet

Number of Bedrooms: 6  
Guests: 12  
Starting price: € 94.000

Overlooking St. Moritz and the whole valley and onto the beautiful alpine mountains of the region, this property is nothing like the others. Spending your holidays in this incredible house feels like being far away from reality, but it is just a walking distance to the picturesque town of St. Moritz. The neighborhood is very quiet, surrounded by trees and the beautiful gardens of the house.

### Layout

First floor with master bedroom, en-suite bathroom with single basin, WC, hot-tub and shower. Spacious living room with access to the huge terrace. Also on the first floor is the separated kitchen and the separated dining room. Second floor with two bedrooms, both with en-suite bathrooms with single basins, shower and WC. In between is a generous living room. There is the possibility to rent the house with a guest apartment on ground floor. This apartment has a kitchen, three bedrooms and a living room.

### Location

- **Nearest Airport:** Samedan
- **Airport:** 10 minutes by car
- **Town:** 5 minutes walk
- **Skiing:** 5 minutes walk
- **Ski-In:** no
- **Ski-Out:** no

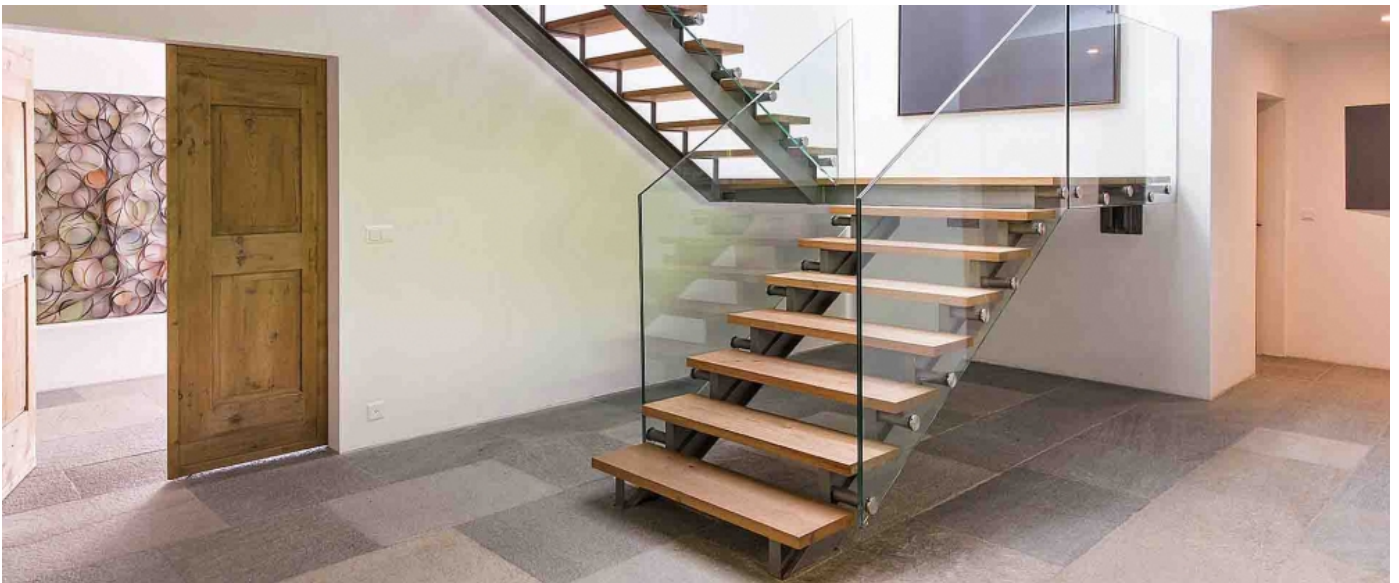
### Facilities

- Flatscreen TV
- Satellite TV
- iPod docking
- Telephone
- Wi-Fi
- Hammam
- Parking
- Garden
- Kid's Playroom
- Close to Town
- Fireplace















© Copyright 2014 [www.esmeraldaluxuryvillas.com](http://www.esmeraldaluxuryvillas.com)  
Telephone : +39 338 3902377 | Email: [info@esmeraldaluxuryvillas.com](mailto:info@esmeraldaluxuryvillas.com)